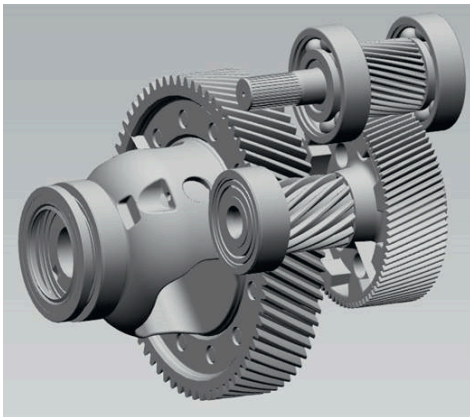
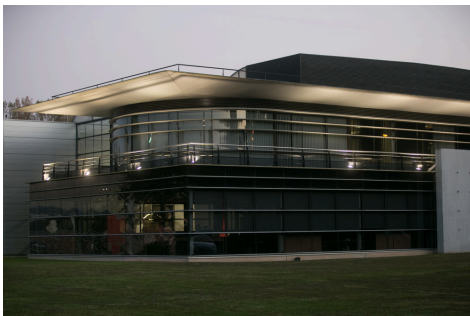
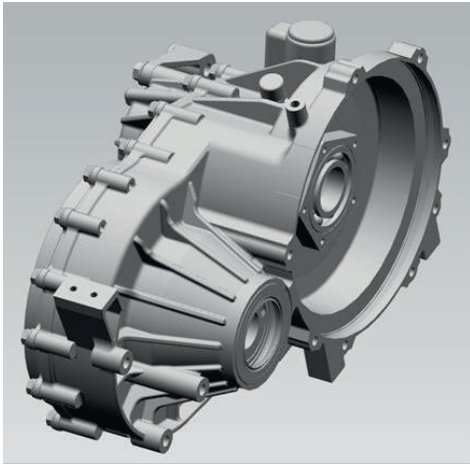


## Reducer for E-AXLE

### Technical specifications



Peak power	180 kW
Peak torque	380 Nm
Maximum speed	18000 rpm
<b>Transmission</b>	
3 axis sigle-speed architecture	
Available Ratio	9.0 / 9.7
Output torque	3350 Nm
Transmission weight	< 28 kg
Center distance	202 mm
Disconnect system	Fully integrated
Park system	Optional
Lubrication	Splash
Additional pump for counter clockwise applications	Optional
<b>Vehicle</b>	
Gross vehicle weight	up to 4200 kg

These specifications are corresponding to the current design Dumarey Powerglide is working on. E-motor and inverters are not part of the defined supply content.

Design can be adapted based on customer specific requirements and platform specifications. An integrated solution could be derived from it if requested.

E-Axle architecture can be developed based on customer needs (2 speed architecture ...).

